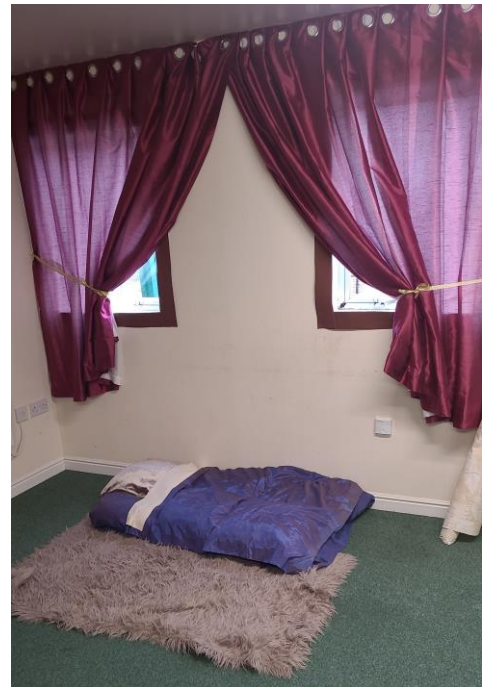


## The Christmas Experience

In Early December Emma turned the Bridge into various scenes from the nativity story. On various days all of Whitefriars school children came up to Nazareth and Bethlehem (the Bridge) to explore the Christmas Story. The children thoroughly enjoyed the experience. Below are the settings that Emma Created.



Gabriel visits Mary in her home.



An Angel visits Joseph in a dream.



Caesar Augustus ordered a census



Mary and Joseph go to Bethlehem



Jesus is born in a manger.



The Angels visit the shepherds.



Wise men from the East visit Jesus.